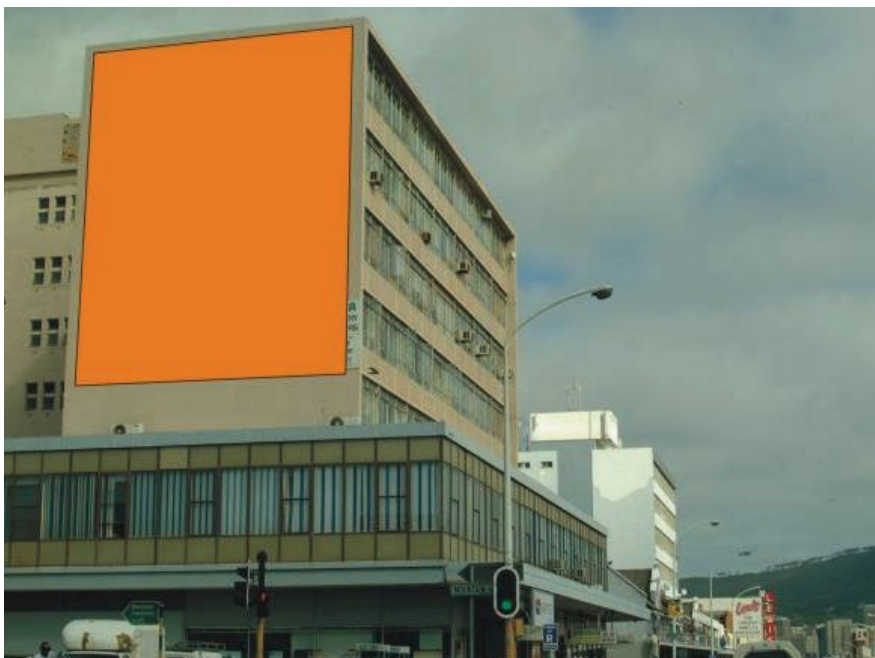


Independent outdoor media



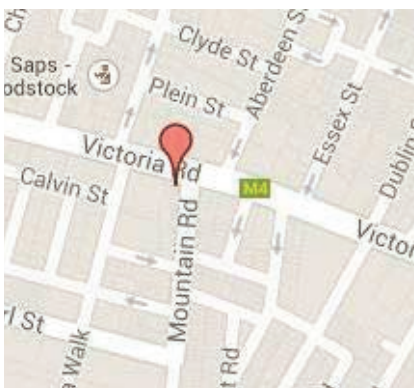
Cape Town Periphery Woodstock | Victoria Road | De Waal House

This wall-sign faces traffic driving along the notoriously congested Victoria Rod (M4) in Woodstock, traffic flowing from the N2 Highway and Southern Suburbs towards the Cape Town CBD and the Peripheral suburbs of Woodstock, Saltriver, Vredehoek and the Gardens. This site is particularly busy in mornings with both private and public transport.

LSM: 4 –10

Traffic Count: 550 000 per month

GPS: -33.929314,18.449668



Contact

T: +27 021 438 6666

M: +27 082 770 1770

E: brent@iom.co.za

Private Bag X1 Camps Bay

South Africa 8040

Style: Portrait

Size: 9m x 9m

Type: PVC

Illuminated: Yes

Alcohol (ARA): Yes

Production: Print, Install & Remove